
Town of Vienna Annex

Community Profile

The Town of Vienna is located in north central Dane County. The Town is bordered on the north by Columbia County. The Village of DeForest and the Town of Windsor form the eastern boundary, the Town and Village of Dane form the western boundary, and the Village of Waunakee and the Town of Westport form the southern boundary.

The Town was created from a division of the Windsor territory in 1849, with the western half of the original town being divided to establish the Town of Dane in 1850. Vienna has remained a predominately agricultural community since its formation and has no cities, villages, or incorporated areas within its boundaries.

According to the United States Census Bureau, the Town of Vienna has a total area of 35.58 square miles, 35.56 square miles of it is land and 0.02 square miles is water.

As of the 2010 Census, there are 1,482 people, 540 households, and 433 families residing in the Town of Vienna. The population density is 42.2 per square mile. There are 558 housing units at an average density of 15.9 per square mile. The municipality population distributed by the Wisconsin Department of Administration indicates that the 2015 population for Town of Vienna was 1,523 people. Table 1 shows the population profile by age for the Town of Vienna according to the 2010 Census.

Table 1 Population Profile of Town of Vienna

Category	Number	Percent
Total population	1,482	100.0
Under 5 years	87	5.9
5 to 9 years	119	8.0
10 to 14 years	115	7.8
15 to 19 years	103	7.0
20 to 24 years	52	3.5
25 to 29 years	54	3.6
30 to 34 years	72	4.9
35 to 39 years	112	7.6
40 to 44 years	120	8.1
45 to 49 years	153	10.3
50 to 54 years	122	8.2
55 to 59 years	123	8.3
60 to 64 years	93	6.3
65 to 69 years	54	3.6
70 to 74 years	47	3.2
75 to 79 years	29	2.0

Category	Number	Percent
80 to 84 years	14	0.9
85 years and over	13	0.9

Data Source: 2010 U.S. Census

American Community Survey estimates for 2014 indicate that the median income for a household in the Town of Vienna is \$92,798 and the median income for a family is \$99,653. The per capita income for the Town of Vienna is \$40,031. 96.2% of the population has at least a high school degree, while 29.3% of the population holds at least a bachelor’s level degree.

Hazard Identification and Risk Assessment

The first step in a hazard analysis is to identify which hazards the community is vulnerable to. Table 2 outlines the hazard identification for the Town of Vienna based on the Data Collection Guide. The Data Collection Guide listed all of the hazards that could impact anywhere in Dane County. The purpose of this worksheet was to identify and rank the hazards and vulnerabilities specific to the jurisdiction. The Town of Vienna’s planning team members were asked to complete the matrix by ranking each category on a scale of 0 to 5 based on the experience and perspective of each planning team member. A ranking of 0 indicated “no concern” while a ranking of 5 indicated “highest concern.” This matrix appears as Table 2. This matrix reflects the significance of the hazards relative to one another.

This matrix reflects that the Town of Vienna is most vulnerable to tornadoes, wind storms, flooding, and winter storms. The vulnerability established here is a qualitative assumption based on the impacts, geographic extent, probability of future occurrence, and magnitude/severity. On the county level, these vulnerabilities were calculated with quantitative data as well.

Table 2 Vulnerability Assessment Matrix for the Town of Vienna

Hazard	Hazard Attributes			Impact Attributes						Total	
	Area of Impact	Past History, Probability of Future Occurrence	Short Term Time Factors	Primary Impact (Short Term - Life and Property)			Secondary Impact (Long Term – Community Impacts)				
						Impact on General Structures	Impact on Critical Facilities	Impact on At-Risk Populations	Social Impact	Economic Impact	Severity Of Other Associated Secondary Hazards
	(1-5)	(1-5)	(1-5)	(0-5)	(0-5)	(0-5)	(0-5)	(0-5)	(0-5)	(0-5)	
Dam Failure	0	0	0	0	0	0	0	0	0	0	0
Extreme Cold	2	2	2	1	1	1	0	1	1	1	11
Extreme Heat	2	2	2	1	1	1	0	3	1	1	13
Drought	3	3	3	1	1	1	0	3	1	1	16
Expansive soils	0	0	0	0	0	0	0	0	0	0	0
Flood	4	4	4	3	3	1	3	3	3	3	28
Fog	1	1	1	1	1	1	1	1	1	1	9
Hail Storm	2	2	2	2	2	1	2	2	2	2	17
Landslide	0	0	0	0	0	0	0	0	0	0	0
Lightning	2	2	2	2	2	2	2	2	2	2	18
Tornado	5	4	4	4	5	5	5	5	5	5	42
Wildfire	1	0	0	1	1	0	1	1	1	1	6
Windstorm	5	4	4	4	4	3	4	4	4	4	36
Winter Storm	5	5	2	2	3	4	4	4	4	4	33

Source: Town of Vienna Data Collection Guide, 2015

Previous Hazard Events

Through the Data Collection Guide, the Town of Vienna noted specific historic hazard events to include in the community profile. These events have been incorporated into the appropriate hazard chapters in the base plan. These events had a particular impact on the community beyond the impacts and events recorded in the Dane County Hazard Mitigation Plan. This is not a comprehensive summary of past incidents, as the hazard profiles collected in the main Mitigation Plan include other events that may have historically impacted the jurisdiction. The events noted by this jurisdiction in the Data Collection Guide include:

Flood: Spring, Summer and Fall of 2008 (Continuous Occurrences)

The Town of Vienna experiences flooding and high groundwater events regularly. Accumulated major water events, snow melt, heavy rains, etc. have caused flooding to many fields and covered many roads for prolonged periods of time. The events occur predominately in the central and southern portions of the town. While no injuries or deaths have been reported, the damages to property, infrastructure, and crops are extensive. Three roads have been closed for extended periods of time within the Town, and two of them need to be elevated. Reported losses include both insured and uninsured claims. A FEMA grant of approximately \$270,000 was made available to the Town for response actions to the flooding events. The Data Collection Guide indicates that this hazard is very likely to occur in the future.

Asset Inventory

Assets include the people, property, and critical facilities within the Town of Vienna that are exposed to hazards in general. Inventories of property, essential infrastructure, and natural, cultural or historic resources help provide a comprehensive picture of the community and provide a method of assessing exposure to hazards by establishing the improved and total values, capacities and populations for these assets. It also forms the basis for estimating potential losses, where possible.

Population

Table 3 Vulnerable Population Summary

Disability Status from the 2014 American Community Survey	Number	Percent of Group with Disability
Population Under 5 years old with a Disability	0	0%
Population 5-17 years old with a Disability	7	3.2
Population 18-64 with a Disability	70	7.8
Population Over 65 years old with a Disability	13	8.9
Total Population with Disability	90	6.8

Other Vulnerable Populations	Estimate	Percentage
Families Below Poverty Level	2	0.5
Individuals Below Poverty Level	35	2.7
Of those poverty: Individuals Under 18	2	0.7
Of those poverty: Individuals Over 65	8	5.5
Total Population Over 5 who Speak English less than "very well"	9	0.7
2014 ACS Total Population Estimate	1315	100%

Data Source: 2014 American Community Survey

General Property

Table 4 Property Exposure Summary

Property Type	Total Parcel Count	Improved Parcel Count	Improved Values (\$)	Content (\$)	Total Value (\$)
Totals	1,123	577	130,701,000	65,350,500	196,051,500
Agriculture	598	152	32,829,200	16,414,600	49,243,800
Commercial	19	17	13,468,600	6,734,300	20,202,900
Utilities	3	0	0	0	0
Industrial	6	6	2,701,700	1,350,850	4,052,550
Institutional/ Governmental	101	14	6,032,600	3,016,300	9,048,900
Other	396	388	75,668,900	37,834,450	113,503,350
Residential	1,123	577	130,701,000	65,350,500	196,051,500

Data Source: Dane County Land Information Office, December 2008

Critical Facilities

The Town of Vienna has identified the following critical facilities important to protect from disaster impacts. These are collected in Table 5.

Table 5 Critical Facility Summary/Essential Infrastructure

Facility	Type*	No. of Facilities	Replacement Value (\$)
Child Care/Private Homes	VF	4	1,000,000
Communications Tower	EI	4	1,258,100
Electric Substation	EI	1	Unknown
Sewer Lift Station	EI	2	1,000,000
Municipal Hall	EI	1	1,000,000

Facility	Type*	No. of Facilities	Replacement Value (\$)
TOTAL		12	4,258,100
*EI: Essential Infrastructure; VF: Vulnerable Facilities; HM: Hazardous Materials Facilities			

Data Source: Town of Vienna Data Collection Guide

Other Assets

Vulnerability to Specific Hazards

This section details vulnerability to specific hazards, where quantifiable, and where it differs from that of the overall County. The previous inventory tables quantify what is exposed to the various hazards within the Town of Vienna. Table 6 cross-references the hazards with the various tables where exposure or vulnerability specifics are found. The intent of Table 6 is to quantify, where possible, future impacts of each hazard on the jurisdiction. In many cases it is difficult to estimate potential losses, so the overall exposure of populations, structures, and critical facilities is referenced.

Table 6 Hazard Vulnerability Specifics

Hazard	Populations	Structures	Critical Facilities	Future Damage Potential
Dam Failure	None	None	None	Specifics unknown; See hazard profile in County Plan
Drought	Minimal	None	Minimal	Specifics unknown; See hazard profile in County Plan
Flooding	See section below	See section below	See section below	See section below
Fog	Minimal	None	None	Specifics unknown; See hazard profile in County Plan
Hailstorm	Minimal	See Property Exposure table 3	See Critical Facility Inventory Table(s)	Specifics unknown; See hazard profile in County Plan
Landslide/ Sinkholes/ Erosion	Minimal	Minimal	Minimal	Specifics unknown; See hazard profile in County Plan
Lightning	See Table 2 Population	See Table 3 Property Exposure	See Critical Facility Inventory Table(s)	Specifics unknown; See hazard profile in County Plan
Severe Cold	See Table 2 Population	See Table 3 Property Exposure	See Critical Facility Inventory Table(s)	Specifics unknown; See hazard profile in County Plan
Severe Heat	See Table 2 Population	None	Minimal	Specifics unknown; See hazard profile in County Plan
Severe Winter Storm	See Table 2 Population	See Table 3 Property Exposure	See Critical Facility Inventory Table(s)	Specifics unknown; See hazard profile in County Plan

Hazard	Populations	Structures	Critical Facilities	Future Damage Potential
Tornado	See Table 2 Population	See section below	See Critical Facility Inventory Table(s)	See section below
Wildfire	Minimal	Minimal	Minimal	Specifics unknown; See hazard profile in County Plan
Windstorm	See Table 2 Population	See Table 3 Property Exposure	See Critical Facility Inventory Table(s)	Specifics unknown; See hazard profile in County Plan

Flood

Structures and Properties in the Floodplain

Refer to the flood profile in the mitigation plan for a description of the methodology used to identify potentially flood-prone properties. Figure 1 shows mapped floodplains, future growth areas, and critical or vulnerable facilities. Tables 7 and 8 outline the primary structures and properties with primary structures on them within the Town of Vienna. Potential number of individuals at risk figures are based on primary residential structures and the average household size within Dane County.

Table 7 Primary Structures in the Floodplain

Total Floodway Structures	Floodway Residential Structures	Total Structures in 100 year Floodplain	Residential Structures in 100 year Floodplain	Potential Number of Individuals at Risk in 100 year Flood	Total Structures in 500 year Floodplain	Residential Structures in 500 year Floodplain	Potential Number of Individuals at Risk in 500 year Flood
0	0	4	4	9.32	4	4	9.32

Source: Analysis based on Dane County Land Information Office Data

Table 8 Properties with Primary Structures in the Floodplain

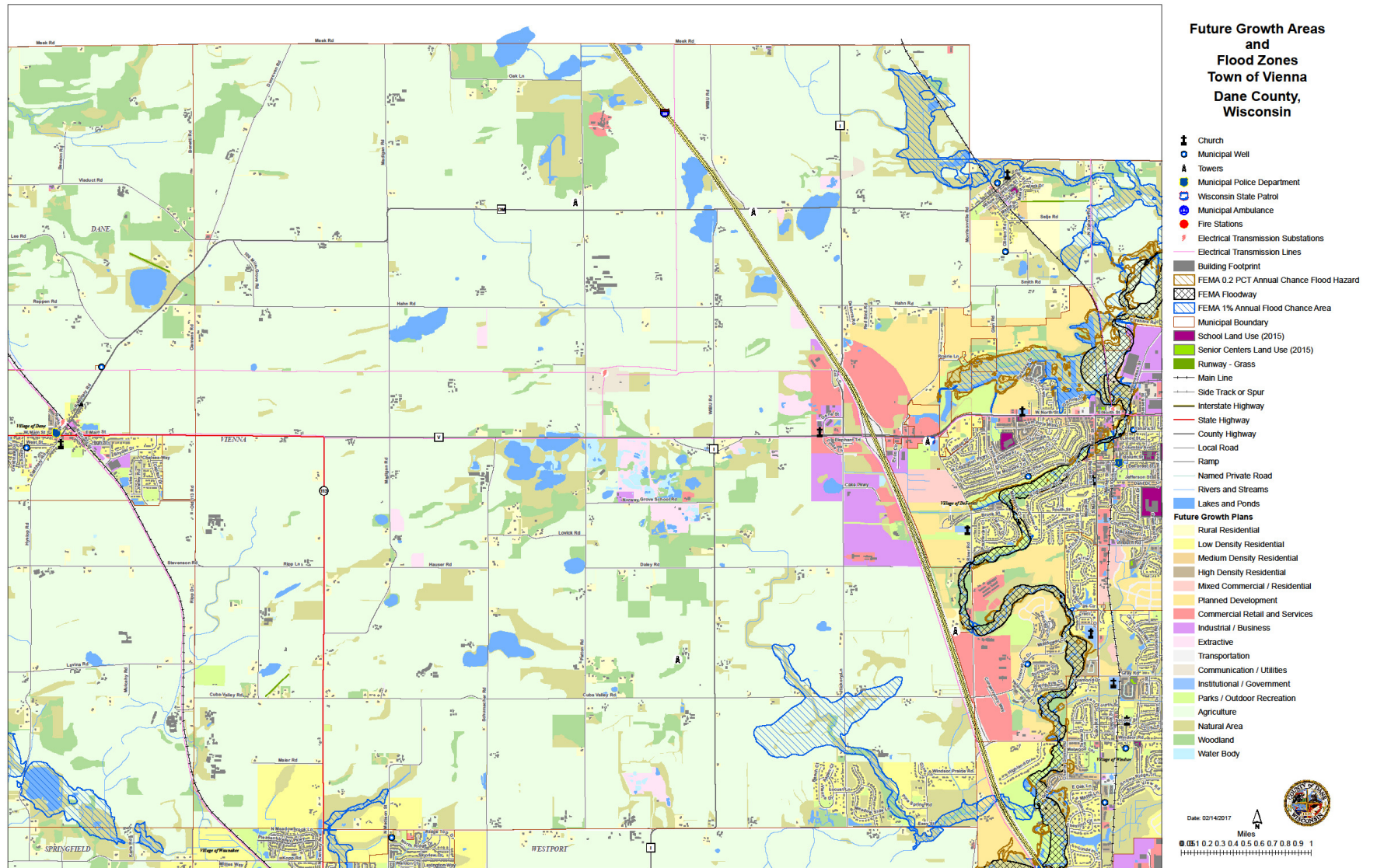
Total Floodway Properties	Floodway Improved Values	Floodway Residential Properties	Total Properties in 100 year Floodplain	Total Improved Value of Properties in 100 year Floodplain	Residential Properties in 100 year Floodplain	Total Properties in 500 year Floodplain	Total Improved Value of Properties in 500 year Floodplain	Residential Properties in 500 year Floodplain
0	\$0	0	4	\$687,700	4	4	\$687,700	4

Source: Analysis based on Dane County Land Information Office Data

Repetitive Loss Properties and Flood Insurance Policies

No repetitive losses have been reported. Flood insurance policies and loss statistics are included as part of the County plan.

Figure 1 Flood Hazards and Future Land Use Map



Tornado

While it is difficult to estimate specific losses to a tornado due to the random nature of the event, a methodology was developed that was applied to each jurisdiction during the update. The table below estimates the percent area of the jurisdiction that could be impacted based on the average sized tornado (F2) in Dane County. High value exposure is based on 100% loss, medium 50% loss, and low is 25% loss to the property potentially impacted. The loss ratio, which is the ratio of the damaged building value to total exposed building value, is a measure of the impact to the jurisdiction as a whole. Communities with loss ratios 10% or more may have difficulty recovering from a disaster. Refer to the tornado hazard profile in the main mitigation plan for more details on this methodology.

Table 9 Tornado Loss Estimate

% Area of Impact	Improved Parcel Count	Affected Structure Estimate	Total Exposed Value	Estimated Loss \$ - High Damage Range	Estimated Loss \$ - Moderate Damage Range	Estimated Loss \$ - Low Damage Range	Loss Ratio for Moderate Damage Range
2.38%	647	15	\$226,888,050	\$5,398,055	\$2,699,027.42	\$1,349,513.71	1.2%

Data Source: Analysis Based on Dane County Land Information Office's data

Growth and Development Trends

Planned land use is shown in Figure 1, in relation to the flood hazard. Table 10 illustrates how the Town of Vienna has grown in terms of population and number of housing units between 2010 and 2014-15. Housing data is to 2014 due to data availability. Table 11, drawn from the Demographics Services Center at the Wisconsin Department of Administration, shows population projections through 2035.

Table 10 Town of Vienna Change in Population and Housing Units, 2010-2014/15

2010 Population	2015 Population	Percent Change (%) 2010-2015	2010 # of Housing Units	2014 # of Housing Units	Percent Change (%) 2010-2014
1,482	1,523	2.77%	558	508	-9.0%

Data Source: Dane County and Wisconsin Department of Administration

Table 11 Town of Vienna Population Projections, 2015-2035

Population Change	5 year Growth %	2015	2020	2025	2030	2035
Increase by same percentage each year	0.55%	1,523	1,565	1,607	1,651	1,697

Data Source: Dane County and Wisconsin Department of Administration

Problems or Additional Vulnerability Issues

In the 2015 Data Collection Guide, the Town of Vienna identified the following additional vulnerability issues:

- There are elderly residents living alone in their homes, however, it has not been much of a problem in the past. Most have relatives, friends or neighbors that check on them.

- An 11 lot addition to the Nature Valley subdivision was made since 2009. We have no other areas to develop for residential housing. Two new businesses are coming in the Vienna Business Center in 2015 and 2016.

Capability Assessment

Capabilities are the programs and policies currently in use to reduce hazard impacts or that could be used to implement hazard mitigation activities. This capabilities assessment summarizes regulatory mitigation capabilities, administrative and technical mitigation capabilities, and fiscal mitigation capabilities for the Town of Vienna.

Mitigation Capabilities Summary

Table 12 lists planning and land management tools typically used by local jurisdictions to implement hazard mitigation activities, or by themselves contribute to reducing hazard losses. The table also indicates which of these tools are currently utilized in the Town of Vienna.

Table 12 Town of Vienna Regulatory Mitigation Capabilities

Regulatory Tool (ordinances, codes, plans)	Yes/No	Comments
General or Comprehensive plan	Yes	
Zoning ordinance	No	Dane County and Village of DeForest have zoning authority in the Town of Vienna
Subdivision ordinance	Yes	
Growth management ordinance	No	
Floodplain ordinance	No	Handled by Dane County and the DNR
Other special purpose ordinance (stormwater, steep slope, wildfire)	Yes	Building Codes
Building code	Yes	
Fire department ISO rating		The Town of Vienna is served by 3 Fire Districts
Erosion or sediment control program	Yes	
Stormwater management program	No	DeForest covers part of the ETZ area
Site plan review requirements	Yes	
Capital improvements plan	No	
Economic development plan	No	
Local emergency operations plan	Yes	
Other special plans	No	
Flood insurance study or other engineering study for streams	No	
Elevation certificates (for floodplain development)	No	
Other	No	

Data Source: Town of Vienna Data Collection Guide

Table 13 identifies the personnel responsible for mitigation and loss prevention activities as well as related data and systems in the Town of Vienna.

Table 13 Responsible Personnel and Departments for the Town of Vienna

Personnel Resources	Yes/No	Department/Position
Planner/engineer with knowledge of land development/land management practices	Yes	Dane County Village of DeForest
Engineer/professional trained in construction practices related to buildings and/or infrastructure	Yes	Town Engineer
Planner/engineer/scientist with an understanding of natural hazards	Yes	Town Engineer
Personnel skilled in GIS	No	
Full time building official	No	Building inspection contracted to General Engineering
Floodplain manager	No	
Emergency manager	Yes	Dane County Town Chairman
Grant writer	No	
Other personnel	No	
GIS Data Resources (Hazard areas, critical facilities, land use, building footprints, etc.)	Yes	Dane County
Warning Systems/Services (Reverse 9-11, cable override, outdoor warning signals)	Yes	Dane County Emergency Management
Other	No	

Data Source: Town of Vienna Data Collection Guide

Table 14 identifies financial tools or resources that the Town of Vienna could potentially use to help fund mitigation activities.

Table 14 Financial Resources for the Town of Vienna

Financial Resources	Accessible/Eligible to Use (Yes/No)
Community Development Block Grants	Yes
Capital improvements project funding	Yes
Authority to levy taxes for specific purposes	Yes
Fees for water, stormwater, sewer, gas, or electric services	Yes
Impact fees for new development	Yes
Incur debt through general obligation bonds	Yes
Incur debt through special tax bonds	Yes

Financial Resources	Accessible/Eligible to Use (Yes/No)
Incur debt through private activities	Yes
Withhold spending in hazard prone areas	Yes

Data Source: Town of Vienna Data Collection Guide

Additional Capabilities

National Flood Insurance Program Participation

The Town of Vienna does not participate in the National Flood Insurance Program as a stand-alone entity, but is covered by the County's participation.

Public Involvement Activities

The Town of Vienna community participated in the County public outreach process. This was a series of public workshops held around the County in which an overview of natural hazard mitigation was given and the County plan was discussed. Residents were then given the opportunity to give their input on mitigation actions that could be taken, and filled out informational surveys that assessed the level of risk the perceived within their own community. More information on these meetings can be found in the County base plan.

Mitigation Objectives (Actions)

Completed Mitigation Actions

Since the 2010 Plan, the Town of Vienna has undertaken the following hazard mitigation actions:

- A tree trimming initiative where employees go in the Spring and identify trees that could fall and affect our roads has been implemented. Anything that could fall on a road during a storm is cut/trimmed. This has proven successful, as we rarely get calls about trees down on roadways after a storm.
- A FEMA flood mitigation grant to turn a temporary waterway through the Madison Sand and Gravel property in to a permanent one was obtained. Construction was completed in the fall of 2015.

Proposed Mitigation Actions

Objective 1: Establish and foster an informal neighborhood/area scale communications and immediate assistance system directed to special population, single member household, and most at risk community residents, including, but not limited to, the elderly.

Steps:

- 1) Define and identify a town-wide grid of communication and watch districts.

-
- 2) Determine persons within grids in need of a special watch or to whom additional information or communications should be relayed in the event of emergencies or natural disasters.
 - 3) Develop and determine the type(s) of information to be communicated.

Lead Implementing Agency: Town of Vienna

Supporting Agencies:

- Waunakee & DeForest Senior Outreach programs
- Dane County Human Services
- Dane County Emergency Management

Possible Funding and Technical Assistance:

- Town Operational Budget/Town Staff
- FEMA- Hazard Mitigation Grant Program
- FEMA- Pre-disaster Mitigation Grant Program
-

Time Line for implementation: Continuous

Priority: Medium

Estimated Cost: Unknown

2009 Plan Status Report:

The following components are complete:

- Established an email list of residents
- Resident phone # list established
- Town divided into sections for each board member to notify

The Town still must address:

- Procedures and information should be updated
- A test exercise should be scheduled of plan

Objective 2: Inform and educate town residents on the locations of the nearest secure natural hazard or general emergency shelter for various types of possible future emergency events.

Steps:

- 1) Inform residents, and encourage them to locate, the nearest natural and general emergency shelters in the surrounding villages
- 2) Continue to evaluate the need for and financial feasibility of constructing a new central town government building with the size and design for use as a shelter and central administrative site for an expanded list of possible/ likely future natural and general emergencies

-
- 3) Identify the types of Natural and General emergencies for which the current town hall could/ would serve as the emergency center
 - 4) Identify and inform residents of the location of the alternate town emergency center for events of which the current town hall would not be viable for use as an emergency shelter or administrative emergency center

Lead Implementing Agency: Town of Vienna

Supporting Agencies:

- Dane County Emergency Management

Possible Funding and Technical Assistance:

- Local Town Operational Budget
- Dane County Emergency Management
- FEMA- Hazard Mitigation Grant Program
- FEMA- Pre-disaster Mitigation Grant Program
-

Time Line: Continued Need and Financial Evaluation

Priority: Medium

Estimated Cost: Unknown

2009 Plan Status Report:

The following components are complete:

- Town prepared and adopted a comprehensive emergency management plan- with local hotels agreeing to provide emergency relief role.
- Town completed a facilities plan in 2008, but chose not to address emergency shelter needs immediately, or until needed financial resources could be identified or found.
- Town Hall would serve few emergency needs.

The Town still must address:

- Finding method for sharing town emergency plan with majority of local residents.
- A long-term Town facilities plan which would or could address possible emergency relief and shelter needs.

Objective 3: Secure and have available adequate back-up electrical power generation for town government buildings in the event of a prolonged electrical power outage due to natural disasters or other possible general causes. Prolonged electrical power outage would seriously disrupt the delivery of essential public services.

Steps:

- 1) Identify the size of electrical generator needed to provide essential temporary electrical power to allow for the provision of continued emergency and necessary governmental services and public system operation.
- 2) Provide for emergency electrical power/ wiring to operate town fuel pumps.
- 3) Cost feasibility study and identification of which budget(s) or agencies responsible for the different needs identified.

Lead Implementing Agencies: Town of Vienna

Supporting Agencies:

- Vienna Utility Districts 1 & 2
- Town of Vienna Utility District Commission

Possible Funding and Technical Assistance:

- Local Operational Budget
- Dane County Emergency Management
- FEMA- Hazard Mitigation Grant Program
- FEMA- Pre-disaster Mitigation Grant Program

Time Line: As soon as funding can be found or allocated.

Priority: Medium

Estimated Cost: Full Cost: \$20,000 - \$40,000 dollars

Shared Cost: \$10,000 - \$20,000 dollars

Objective 4: Complete a more detailed “Vulnerability to Flood” analysis. Vienna has experienced major flooding and long term road closing due to sustained high-water in 2009.

Steps:

- 1) A new “Vulnerability to Flood” Section needs to be prepared and added to Vienna’s plan.

Lead Implementing Agencies: Town of Vienna

Supporting Agencies:

- FEMA
- Dane County Emergency Management Staff
- Dane County Land and Water Resources Department

Funding and Technical Assistance:

- Dane County Emergency Management Staff
- Town of Vienna Staff
- Dane County Soils and Conservation Office Staff
- FEMA- Hazard Mitigation Grant Program
- FEMA- Pre-disaster Mitigation Grant Program

Time Line: Begin immediately after plan adoption.

Priority: High

Estimated Cost: \$500,000

Objective 5: Stormwater/Flood relief channel.

Steps:

- 1) Identify relief channel route.
- 2) Study impacted wetlands, delineate wetlands downstream structures.
- 3) Identify waterway easement legal descriptions.
- 4) Seek grants or funding options.
- 5) Purchase easement and construct relief channel.

Lead Implementing Agency:

- Town of Vienna
- Drainage District #29

Supporting Agencies:

- Dane County Land and Water Resources Department

Possible Funding and Technical Assistance:

- FEMA
- DNR
- Army Corp of Engineers

Timeline: 1-2 years.

Priority: High

Estimated Costs: \$500,000

Objective 6: Long term flood relief mitigate plan for portions of Town of Vienna sections 15, 16, 21, 22, 23, & 26.

Steps:

- 1) Seek grants or funding sources to study and identify mitigation solutions to for long term relief of flooding.
- 2) Explore and/or create a water management district.
- 3) Seek public and private participation into mitigation planning process.
- 4) Seek grants or funding sources for the purchase of public waterway channel land.
- 5) Purchase necessary waterway lands.
- 6) Construct defined waterway channel and required control structures.

Lead Implementing Agency:

- Town of Vienna
- Dane County

Supporting Agencies:

- Dane County
- State of Wisconsin
- US Fish & Wildlife

Possible Funding and Technical Assistance:

- FEMA
- DNR
- Dane County Water Resources
- Army Corp of Engineers

Timeline: As soon as funding sources can be identified.

Priority: High

Estimated Costs: \$350,000

Objective 7: Relieve or provide planned storage for storm water for private properties adjacent to Interstate Highway I90/94 & 39 in Town of Vienna sections 3, 11, & 14 which are flooded due to additional lanes being constructed for the Interstate Highway, without additional storm water storage capacity planning .

Steps:

- 1) Seek a grant or source of funding to identify specific causes for the increasing amount of water flooding lands adjacent to the Interstate Highway.

-
- 2) Identify relief or mediation solutions to drain or provide for long term storage of storm water run-off flows from the Interstate Highway.
 - 3) Seek grants or sources of funding to mitigate the storm water flooding in sections 3, 11, & 14 of the Town of Vienna adjacent to Interstate Highway I90/94 & 39.
 - 4) Construct necessary drainage channel or purchase property for planned long term storage of Interstate Highway run-off water.

Lead Implementing Agency: Town of Vienna

Supporting Agencies:

- Dane County
- State of Wisconsin
- US Fish & Wildlife

Possible Funding and Technical Assistance:

- US Army Corp of Engineers
- Wisconsin DNR
- FEMA
- Dane County Water Resources

Timeline: As soon as funding sources are located.

Priority: Medium to High

Estimated Costs: \$ 250,000

Objective 8: Support Dane County efforts to mitigate natural hazards at the local level through continued collaboration with County projects in the Town of Vienna area. The Town will continue to lower its vulnerability to natural hazards by distributing County hazard mitigation information and evaluating grant opportunities for potential use on hazard mitigation projects.

Steps:

- 1) Consider Dane County hazard mitigation information and its relevance to Town hazard mitigation efforts and resident safety.
- 2) Take necessary steps to apply for hazard mitigation grant money when available.

Lead Implementing Agency: Town of Vienna

Supporting Agencies: Dane County Emergency Management

Possible Funding and Technical Assistance:

Timeline: Continuous

Priority: Moderate

Estimated Costs: Unknown